



Happy Easter!

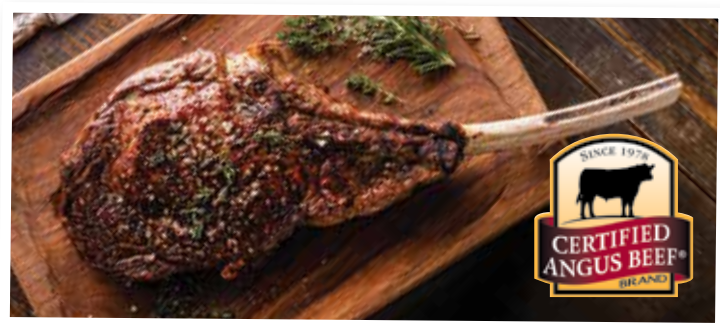
Star Market will be closed Easter Sunday, April 5th, so our team can be with their families!

Thank you!

Niman Ranch Fresh LEG OF LAMB

Domestic, California Leg of Lamb is one of our most popular entrees for Easter. Because the leg meat is so tender and juicy it is ideal for dry-heat cooking. A delicate flavor,

our leg of Lamb is wonderful grilled with just salt and pepper as seasonings, but is also equally delicious with marinades, herbs and dry rubs.



Certified Angus Beef TOMAHAWK STEAKS 22.99 Lb.

A beef tomahawk steak is a bone-in ribeye steak known for its long frenched rib bone! This is a table tender classic!



Beeler's BONE-IN HAM HALVES 6.99 Lb.

Try this tasty, tangy ham. The perfect choice for your Easter celebration!



Fresh! Smart Chicken CHICKEN THIGHS 6.29 Lb.

Boneless and Skinless. Wonderful prepared in so many ways.

Ingredients

- 1 Cup Fresh Strawberries Halves
- 1 Cup Fresh Raspberries
- 1 Cup Fresh Blueberries
- 1 Cup Apple Slices
- 1 Cup Tangerine Segments
- 1 Cup Pineapple Chunks
- 1 Cup Mini Marshmallows
- 1 Cup Vanilla Yogurt
- 2 Tablespoons Local Honey

Instructions

For a fruitier mix change regular marshmallows to the fruit flavored option! Mix all ingredients in a bowl and serve!



#566 Driscoll's STRAWBERRIES \$3.99 EA.

Sold in a 16 oz. Package.



FRIDAY 7:30PM
APRIL 17

Saint Paul San Pablo
Episcopal Church, Salinas
Adults \$20 • Students Free

SATURDAY 7:30PM
APRIL 18

First Presbyterian
Church Monterey
Adults \$25 • Students Free

SUNDAY 2:30PM
APRIL 19

First Presbyterian
Church Monterey
Adults \$25 • Students Free



Camerata Singers
Mark Purcell
Artistic Director and Conductor



Marianne's Ice Cream of Santa Cruz

Selected Varieties.
Quart Tub

7.99



Nabisco Snack Crackers

Selected Varieties.
3.5-8 oz. Package

4.99



Betty Crocker Cake Mix or Frosting

Selected Varieties.
12-16 oz. Package or Tub

3 For \$5



Best Foods Mayonnaise

Selected Varieties.
30 oz. Jar

6.99



Glaceau Vitaminwater

Selected Varieties.
20 oz. Bottle

2 For \$3



Lay's Classic or Kettle Cooked Chips

Selected Varieties.
5-9.37 oz. Package

2 For \$7



Claussen Pickles

Selected Varieties.
20-32 oz. Jar

3.99

***** THESE SPECIAL PRICES ARE EFFECTIVE ON WEDNESDAY, APRIL 1 THROUGH TUESDAY, APRIL 7, 2026. *****

STAR MARKET • OPEN MON.-SAT. 8:30AM TO 8:30PM. SUN: 9:30AM TO 7PM • 1275 S. MAIN ST. AT THE CORNER OF BLANCO RD. & S. MAIN ST.

BUTCHER SHOP

"A REAL CUT ABOVE...IN TASTE AND IN TENDERNESS."



Fresh! Niman Ranch
Domestic Leg of Lamb **12⁹⁹** Lb.
Serving a ham for Easter adds a personal touch with very little extra effort.



Beeler's Bone-In
Spiral Sliced Ham **7²⁹** Lb.
Serving a ham for Easter adds a personal touch with very little extra effort.



Beeler's
Bone-In Ham Halves **6⁹⁹** Lb.
The smoky, country flavor of a ham brings old-fashioned elegance to any holiday.



Certified Angus Beef
Tomahawk Steaks **22⁹⁹** Lb.
It's the superior quality marbling that leads to super taste and tenderness in every bite.



Fresh
Ground Lamb **10⁹⁹** Lb.
A great alternative for burgers, meatloaf, spaghetti, tacos and more!



Domestic
Lamb Loin Chops **21⁹⁹** Lb.
Enjoy the spirit of Mediterranean cuisine with fresh herbs and vegetables.



Smart Chicken Brand
Chicken Thighs **6²⁹** Lb.
Boneless & Skinless. Tender, juicy and delicious breasts for a terrific meal anytime!



Certified Angus Beef
Rib Eye Steaks **24⁹⁹** Lb.
This is a very versatile and flavorful cut of beef. Taste the Sizzle tonight!

★ ★ ★ ★ ★ **OUR GROCERY HOT BUYS OF THE WEEK** ★ ★ ★ ★ ★



Casa Sanchez Salsa Roja
Selected Varieties.
15 oz. Tub
5¹⁹



Challenge or Danish Creamery Butter
Selected Varieties.
13-16 oz. Package
4⁹⁹



Florida's Natural Orange Juice
Selected Varieties.
52 oz. Carton
3⁹⁹



Star's Bulk Foods! Jeffrey's Spiced Pecans
#1148 - From Carmel Valley.
19⁹⁹ Lb.



Star's Cheese Dept! Saint Angel Triple Cream
Ultra rich cows milk cheese.
Imported from France.
19⁹⁹ Lb.



Star's Cheese Dept! Fromager Truffle
Double cream with black truffle pieces.
Imported from France.
23⁹⁹ Lb.



Star's Cheese Dept! Ski Queen
Sweet and rich with caramel taste.
Imported from Norway.
8.8 oz. Package.
9⁹⁹ Ea.



Star's Cheese Dept! Port Wine Derby
Creamy British cow milk marbled with port wine. Product of England.
19⁹⁹ Lb.

FRESH PRODUCE

"OUR ROOTS ARE IN FRESH QUALITY FRUITS & VEGGIES."



#566
Driscoll's
Fresh Strawberries **3⁹⁹** Ea.
Our "berry" best for your table!
Sold in a 16 oz. Package.



#742
Tropical
Whole Pineapple **1⁶⁹** Lb.
Enjoy the sweet tropical fresh flavor of these whole Pineapples!



#660
Whole Cantaloupe Melon **99¢** Lb.
A juicy fruit favorite the whole family will enjoy.



#33383-14605
Wonderful Halos Tangerines **5⁹⁹** Ea.
Loaded with Vitamin C and loaded with flavor! Sold in a 3 Lb. Bag.



#544
Creamy Fresh Avocados **1⁴⁹** Ea.
Famous for their creamy texture and superior flavor.



#715756-50017
Driscoll's
Sweetest Batch Blueberries **6⁹⁹** Ea.
Perfect on pancakes, wonderful on waffles and super over cereal! 11 oz. Package.



#2131, 2132
Organic Bunched Beets **1⁹⁹** Ea.
Wonderful sliced on your garden salad for extra flavor and color.



#2506
Organic Gala Apples **2²⁹** Lb.
Crispy and crunchy, sweet and delicious snacking apples.



"EVERY DAY & IN EVERY WAY, WE'RE WORKING HARDER TO SAVE YOU MORE!"